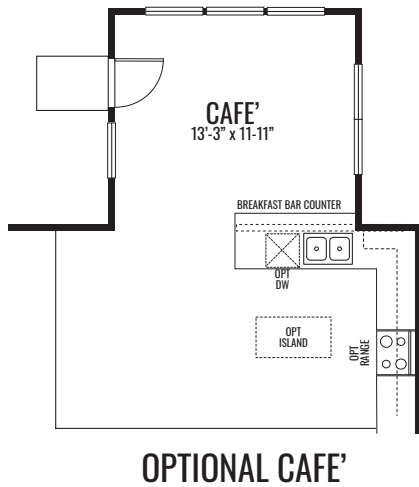
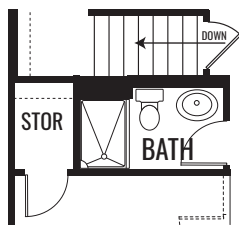


THE BROADMOOR

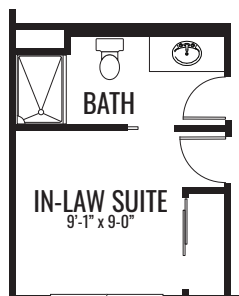
2,636 Square Feet | 3-4 BDRM | 2.5-3 BATH



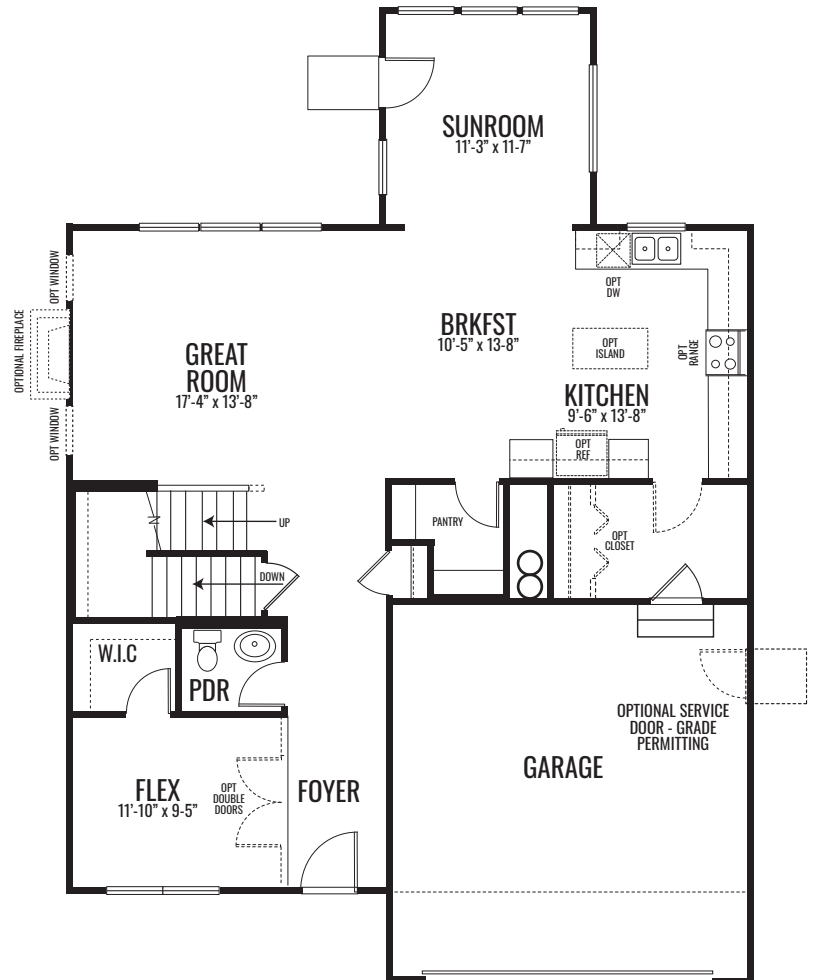
OPTIONAL CAFE'



OPTIONAL BATH W/ SHOWER



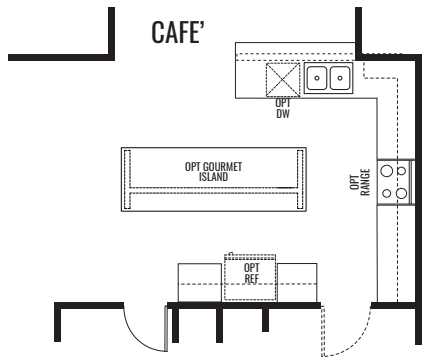
OPTIONAL IN-LAW SUITE



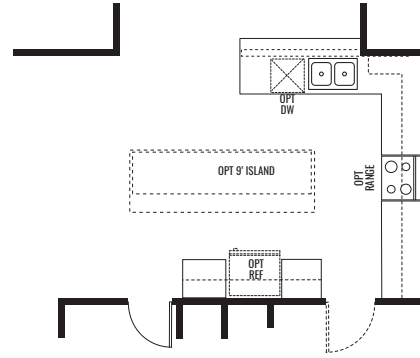
FIRST FLOOR

THE BROADMOOR

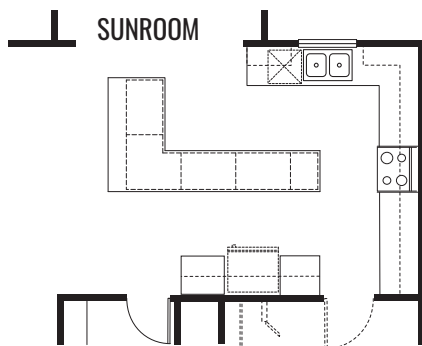
2,636 Square Feet | 3-4 BDRM | 2.5-3 BATH



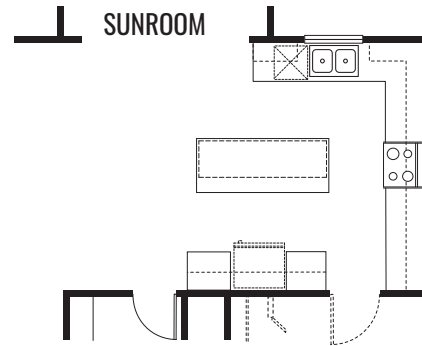
OPTIONAL 9' GOURMET ISLAND W/ CAFE'



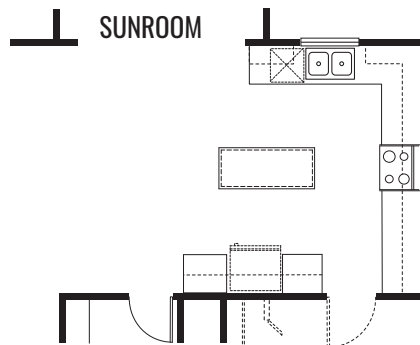
OPTIONAL 9' ISLAND W/ CAFE'



OPTIONAL "L" ISLAND



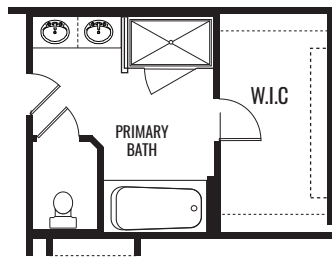
OPTIONAL 7' ISLAND



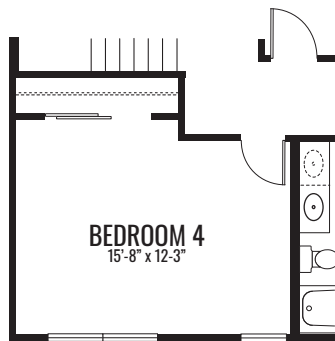
OPTIONAL 5' ISLAND

THE BROADMOOR

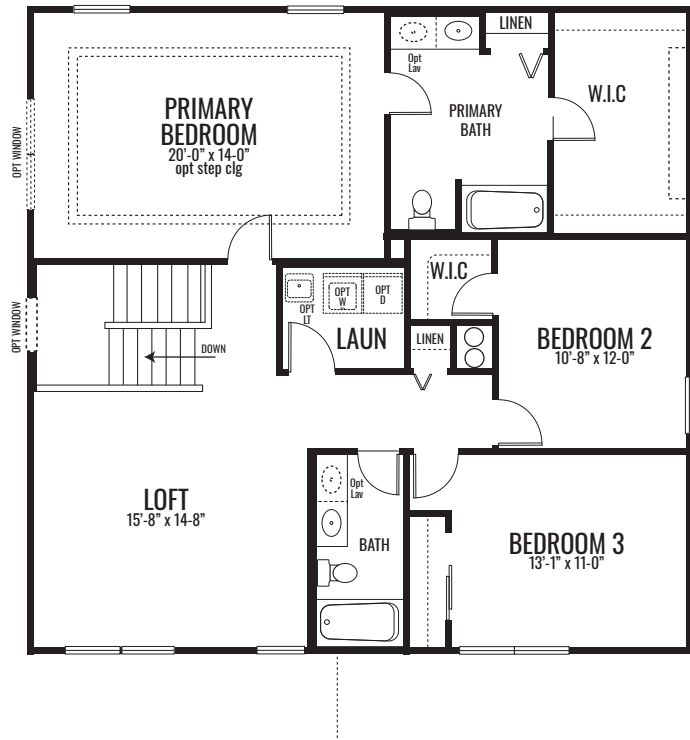
2,636 Square Feet | 3-4 BDRM | 2.5-3 BATH



OPT LUXURY PRIMARY BATH



OPT BEDROOM 4



SECOND FLOOR

FALLING WATERS



THE BROADMOOR

2,636 Square Feet | 3-4 BDRM | 2.5-3 BATH



ELEVATION "B"

www.providencehomes.net

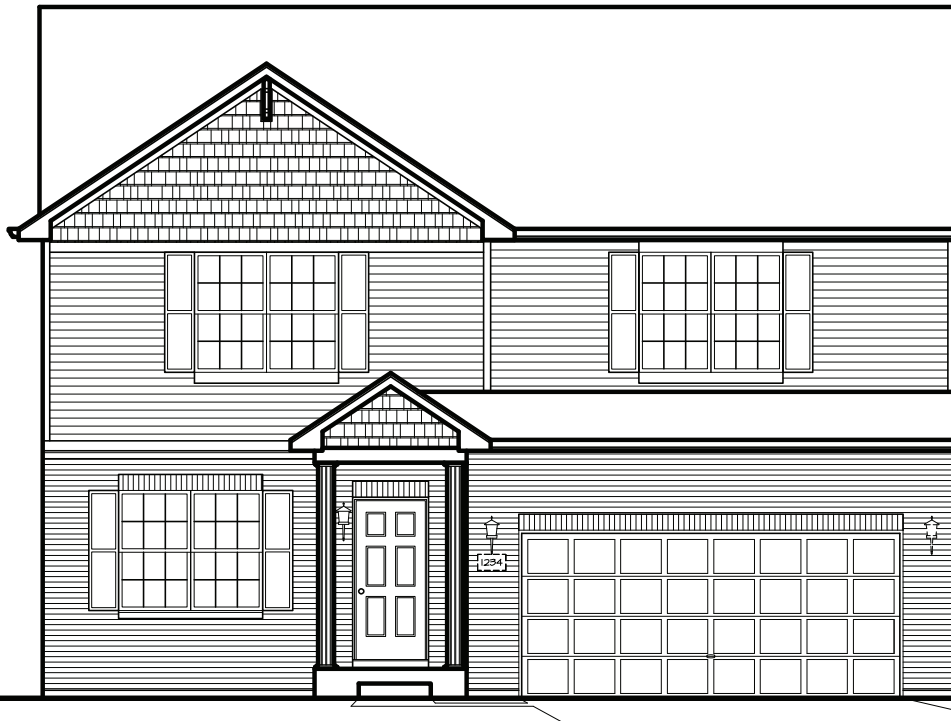
Artist's renderings may vary in precise detail as compared to actual construction. All dimensions are approximate. Providence Real Estate Development, LLC. DBA Providence Homes in an effort to improve its product, reserves the right to make changes without notice. Actual home may be built as shown or reversed as dictated by engineered site plan. © Copyright 2024, Providence Real Estate Development, LLC.

FALLING WATERS



THE BROADMOOR

2,636 Square Feet | 3-4 BDRM | 2.5-3 BATH



ELEVATION "C"

www.providencehomes.net

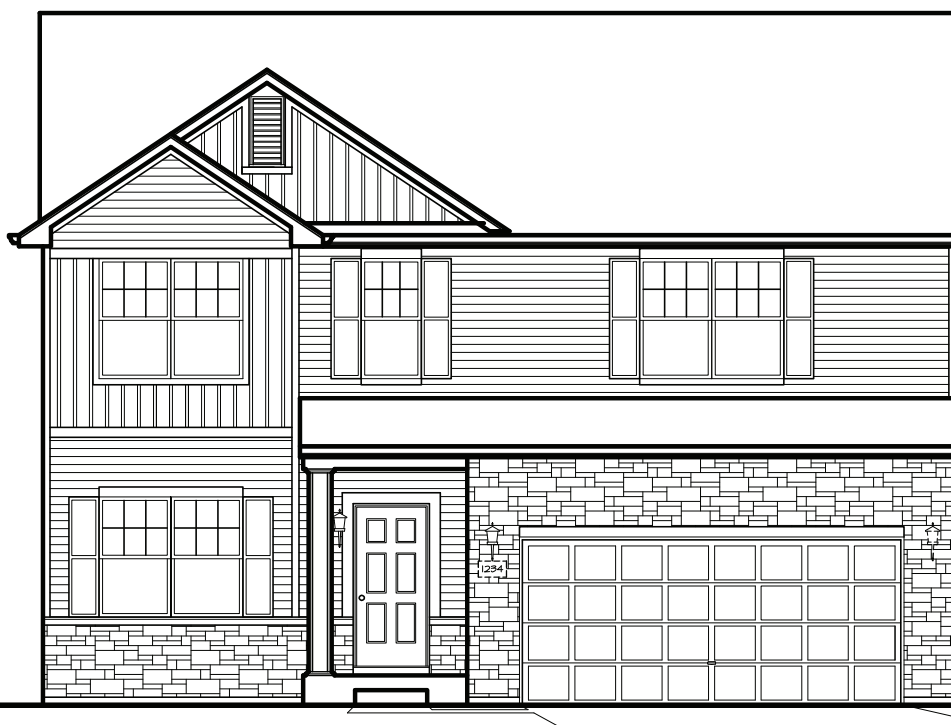
Artist's renderings may vary in precise detail as compared to actual construction. All dimensions are approximate. Providence Real Estate Development, LLC. DBA Providence Homes in an effort to improve its product, reserves the right to make changes without notice. Actual home may be built as shown or reversed as dictated by engineered site plan. © Copyright 2024, Providence Real Estate Development, LLC.

FALLING WATERS



THE BROADMOOR

2,636 Square Feet | 3-4 BDRM | 2.5-3 BATH



ELEVATION "D"

www.providencehomes.net

Artist's renderings may vary in precise detail as compared to actual construction. All dimensions are approximate. Providence Real Estate Development, LLC. DBA Providence Homes in an effort to improve its product, reserves the right to make changes without notice. Actual home may be built as shown or reversed as dictated by engineered site plan. © Copyright 2024, Providence Real Estate Development, LLC.