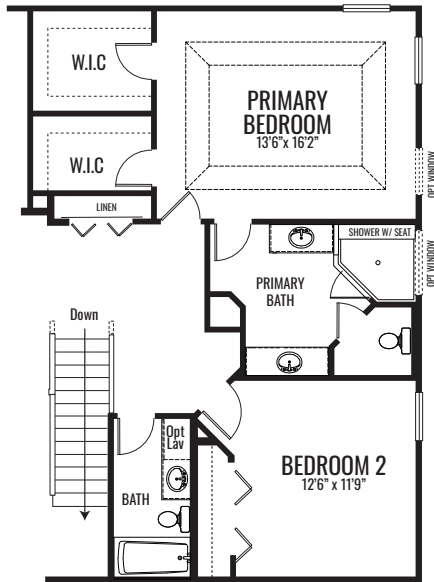
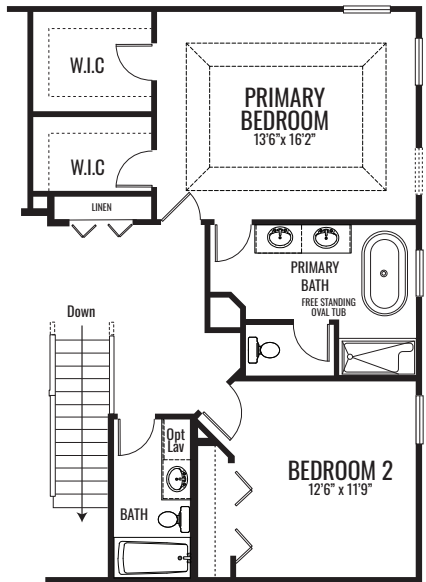


THE CARLISLE

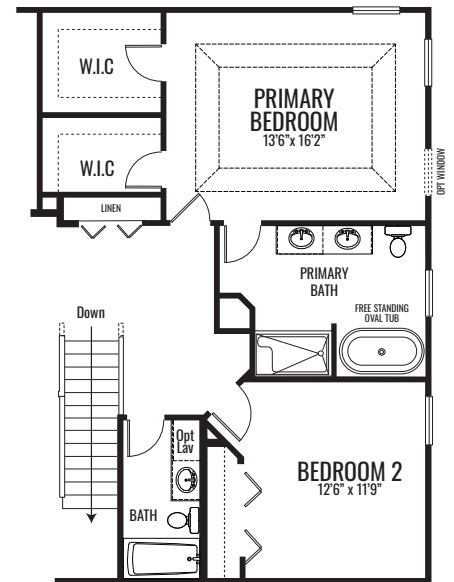
2,940 Square Feet | 4 BDRM | 2.5 BATH



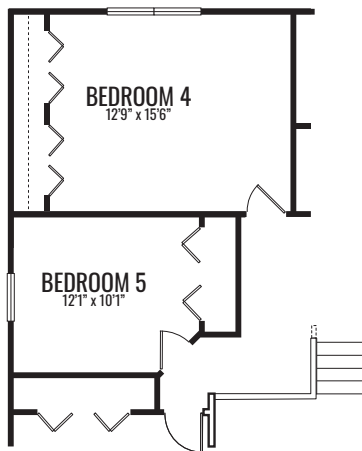
OPTIONAL SPA BATH



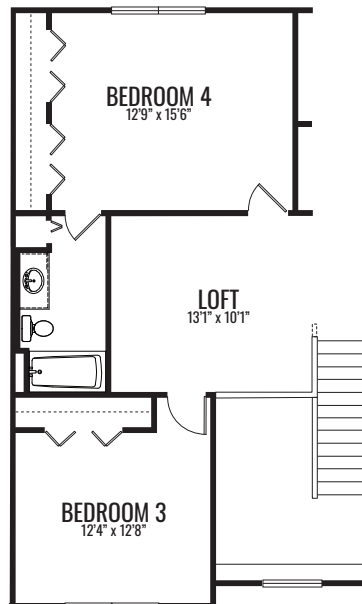
**LUXURY PRIMARY BATH
ELEVATION A**



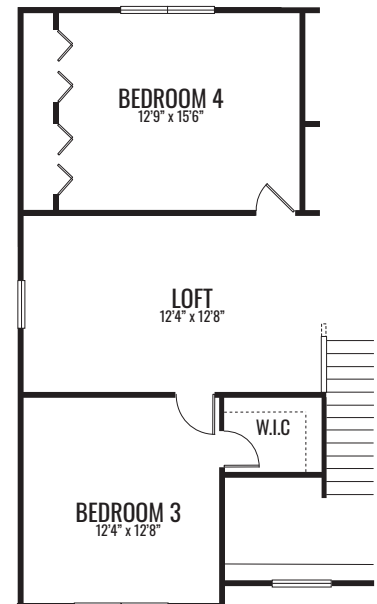
**LUXURY PRIMARY BATH
ELEVATION B**



OPTIONAL BED 5



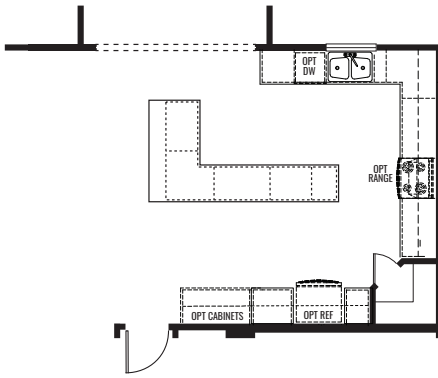
OPTIONAL 3rd BATH



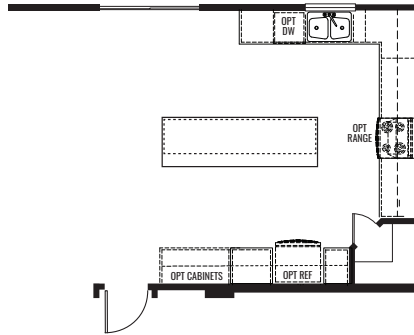
OPTIONAL W.I.C. BED 3

THE CARLISLE

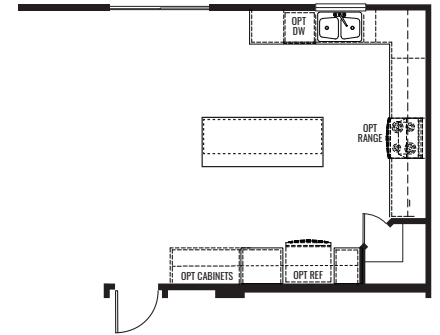
2,940 Square Feet | 4 BDRM | 2.5 BATH



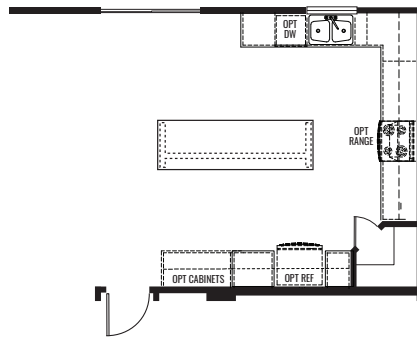
OPT. ISLAND 10'6" x 6'
W/ EXTENDED COUNTERTOP
(ONLY W/ SUNROOM OPTION CHOSEN)



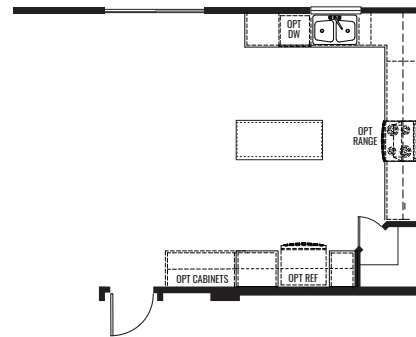
OPT. ISLAND 9'
W/ EXTENDED COUNTERTOP



OPT. ISLAND 7'
W/ EXTENDED COUNTERTOP



OPT. DELUXE ISLAND 9'
W/ EXTENDED COUNTERTOP
AND WAINSCOT TRIM



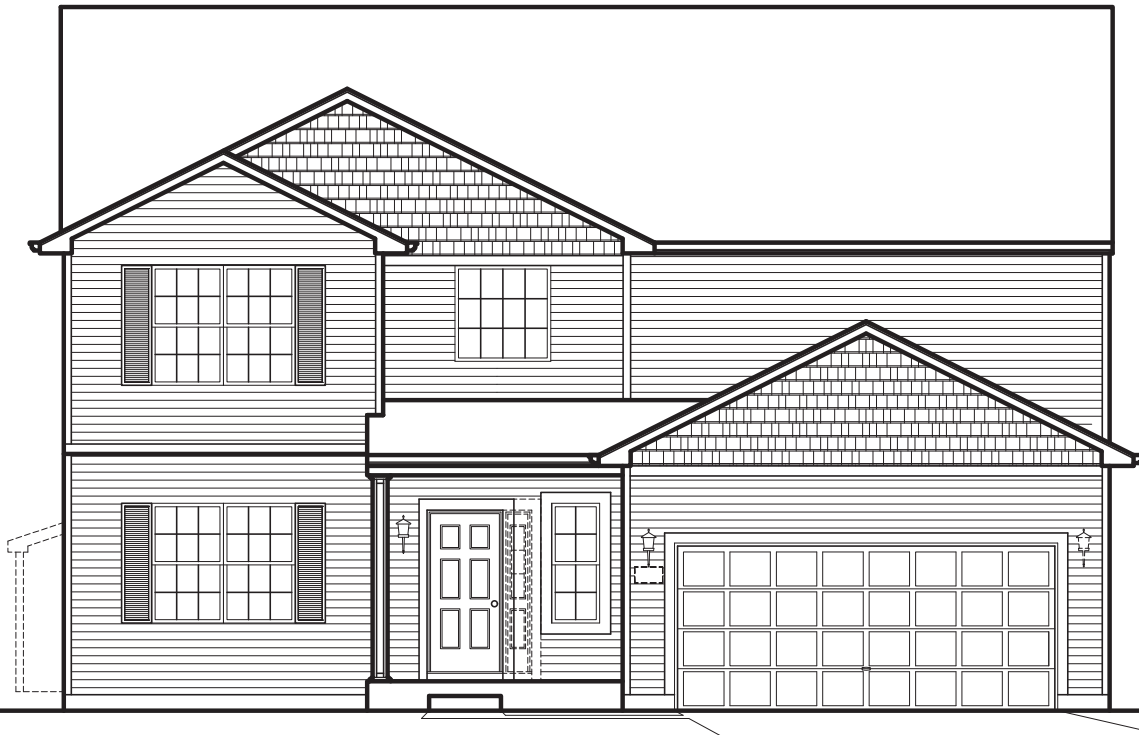
OPT. ISLAND 5'
W/ EXTENDED COUNTERTOP

HERITAGE FALLS



THE CARLISLE

2,940 Square Feet | 4 BDRM | 2.5 BATH



ELEVATION "A"

www.providencehomes.net

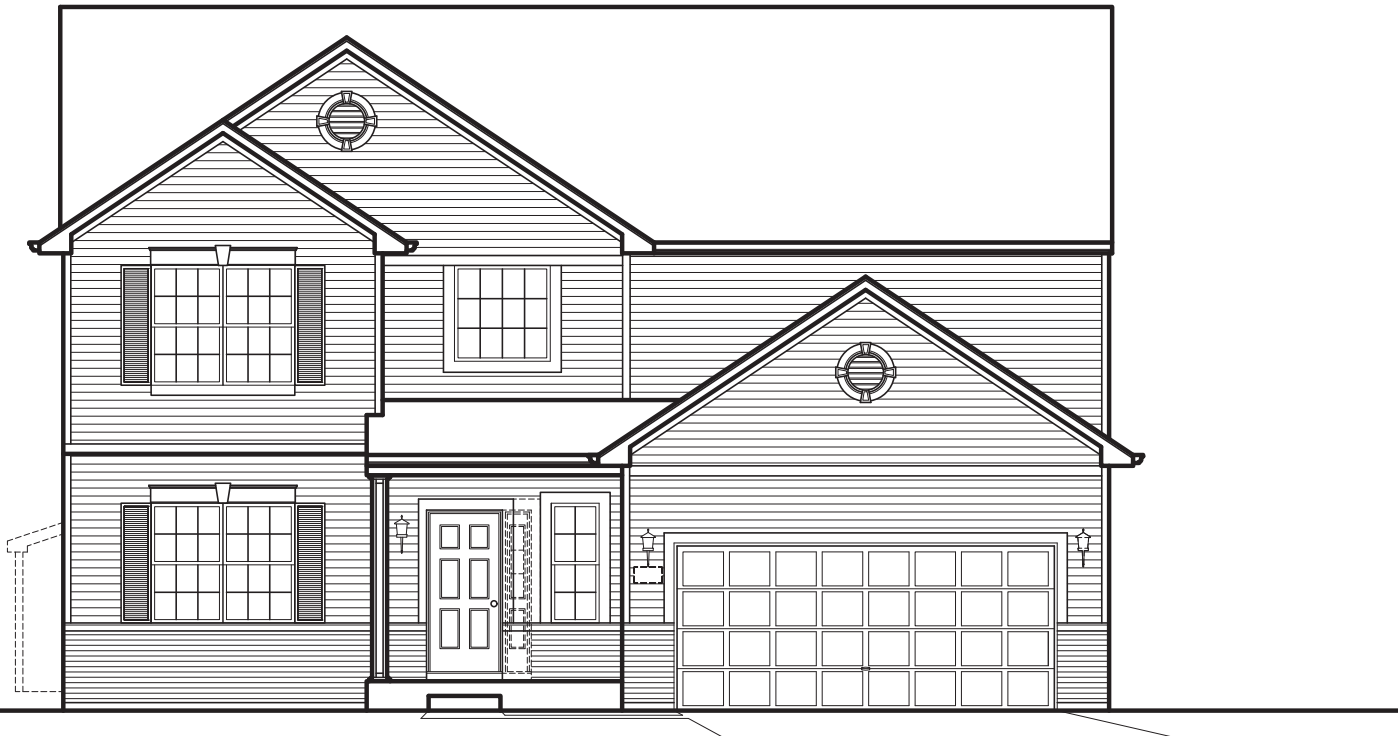
Artist's renderings may vary in precise detail as compared to actual construction . All dimensions are approximate. Providence Real Estate Development, LLC. DBA Providence Homes in an effort to improve its product, reserves the right to make changes without notice. Actual home may be built as shown or reversed as dictated by engineered site plan . © Copyright 2024, Providence Real Estate Development, LLC.

HERITAGE FALLS



THE CARLISLE

2,940 Square Feet | 4 BDRM | 2.5 BATH



ELEVATION "B"

www.providencehomes.net

Artist's renderings may vary in precise detail as compared to actual construction. All dimensions are approximate. Providence Real Estate Development, LLC. DBA Providence Homes in an effort to improve its product, reserves the right to make changes without notice. Actual home may be built as shown or reversed as dictated by engineered site plan. © Copyright 2024, Providence Real Estate Development, LLC.

HERITAGE FALLS



THE CARLISLE

2,940 Square Feet | 4 BDRM | 2.5 BATH



ELEVATION "C"

www.providencehomes.net

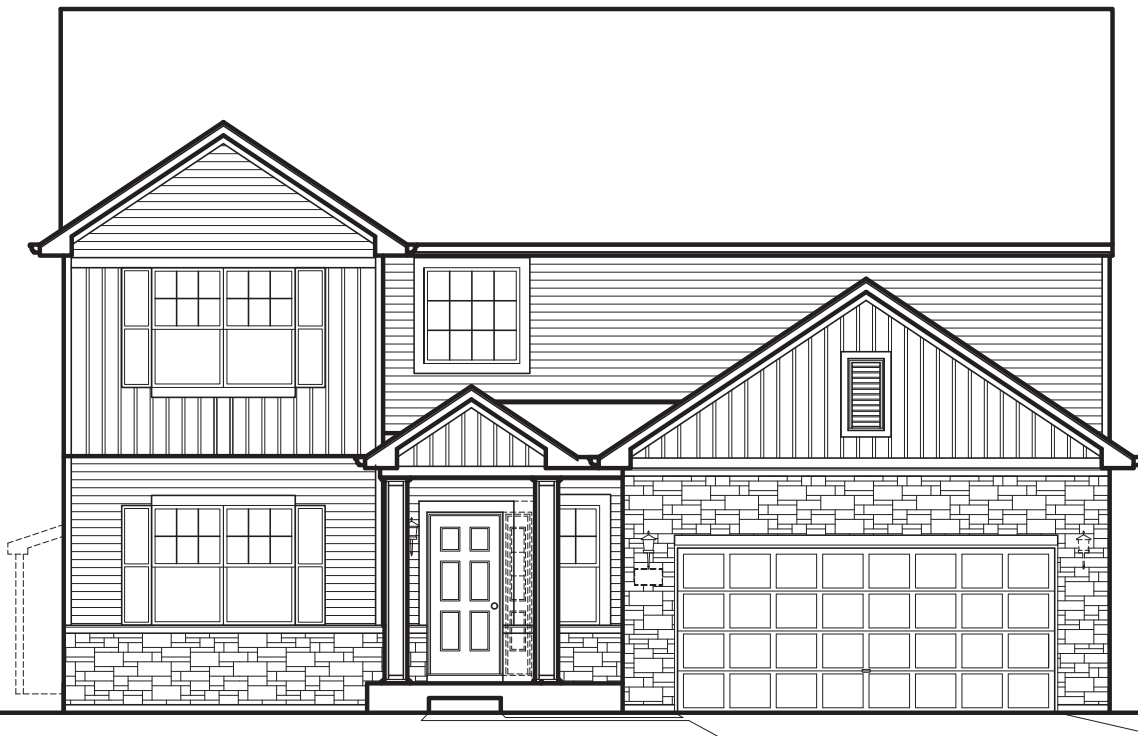
Artist's renderings may vary in precise detail as compared to actual construction. All dimensions are approximate. Providence Real Estate Development, LLC. DBA Providence Homes in an effort to improve its product, reserves the right to make changes without notice. Actual home may be built as shown or reversed as dictated by engineered site plan. © Copyright 2024, Providence Real Estate Development, LLC.

HERITAGE FALLS



THE CARLISLE

2,940 Square Feet | 4 BDRM | 2.5 BATH



ELEVATION "D"

www.providencehomes.net

Artist's renderings may vary in precise detail as compared to actual construction. All dimensions are approximate. Providence Real Estate Development, LLC. DBA Providence Homes in an effort to improve its product, reserves the right to make changes without notice. Actual home may be built as shown or reversed as dictated by engineered site plan. © Copyright 2024, Providence Real Estate Development, LLC.