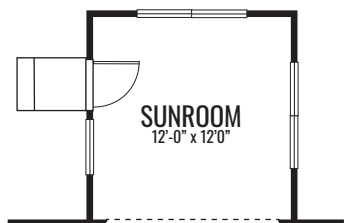
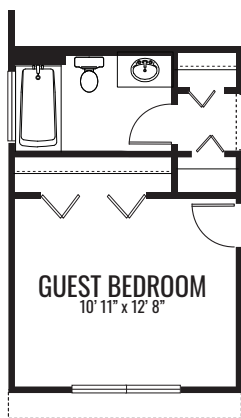


THE VICTORIA

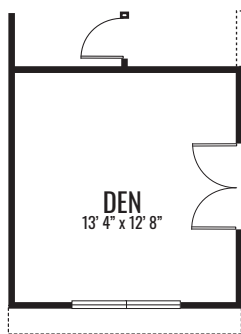
2,940 Square Feet | 4 BDRM | 2.5 BATH



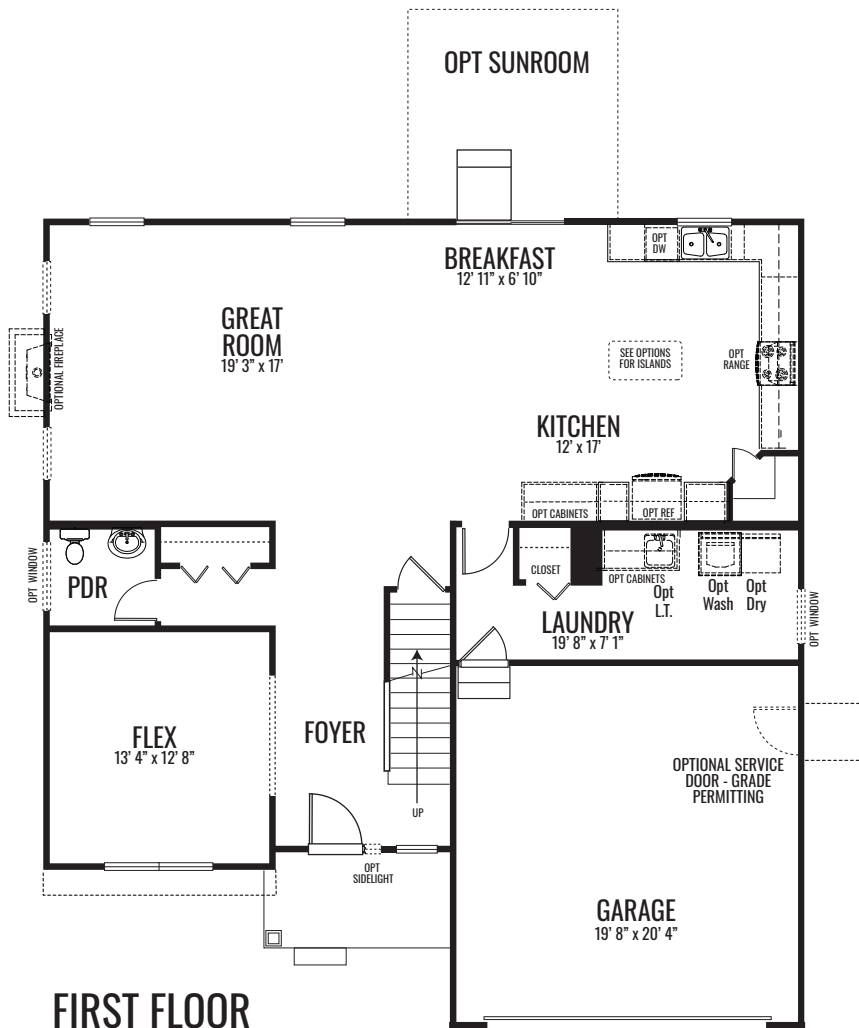
BREAKFAST
OPT SUNROOM



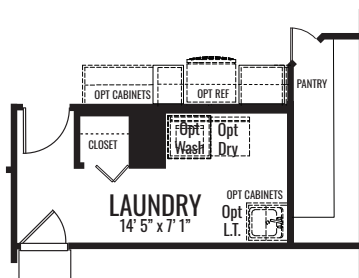
OPT GUEST BEDROOM



OPT DEN



FIRST FLOOR

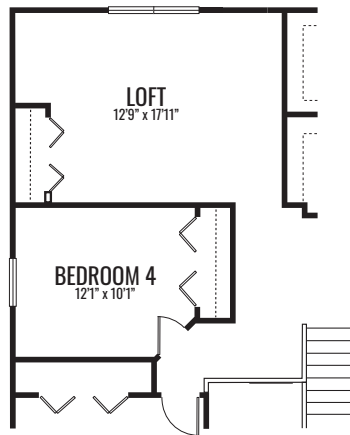


OPT EXPANDED PANTRY

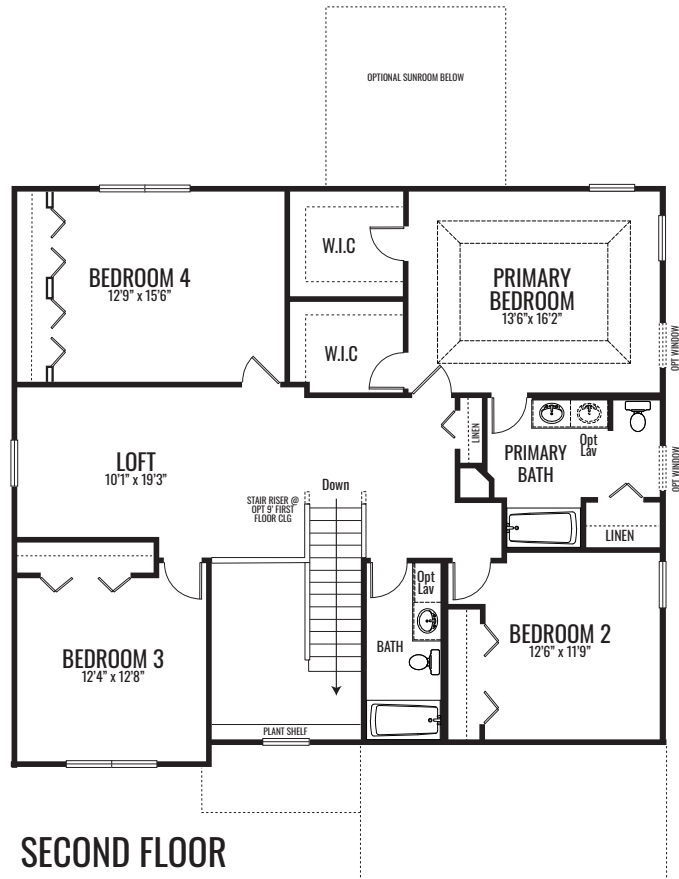
www.providencehomes.net

THE VICTORIA

2,940 Square Feet | 4 BDRM | 2.5 BATH



OPT BR4/LOFT LAYOUT

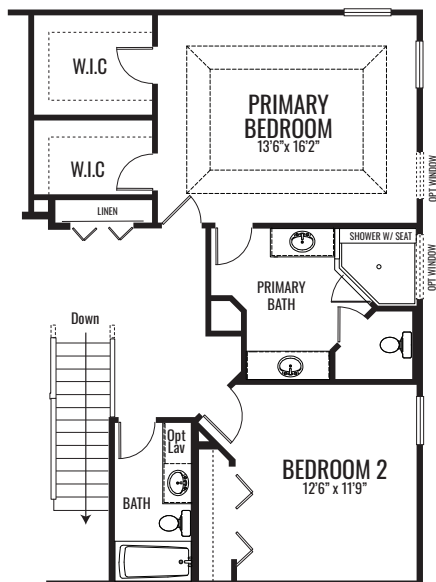


SECOND FLOOR

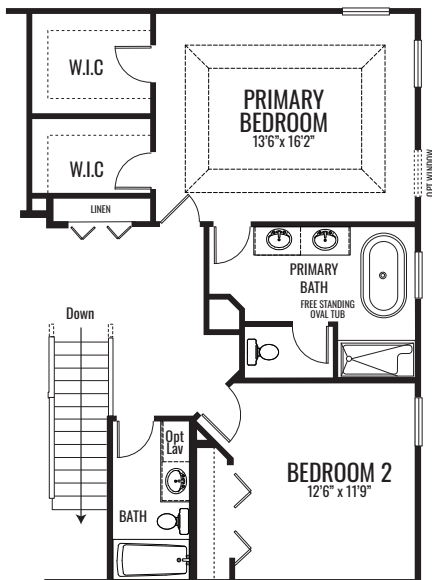


THE VICTORIA

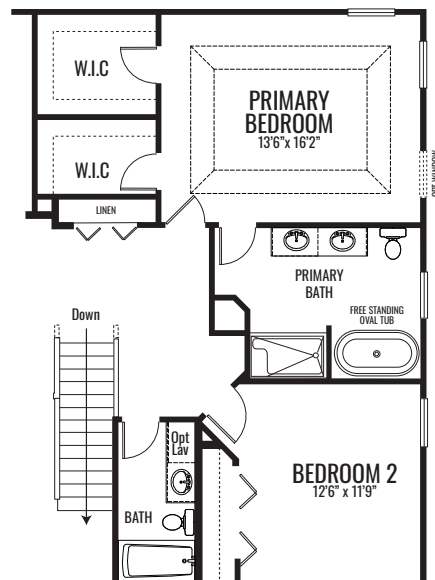
2,940 Square Feet | 4 BDRM | 2.5 BATH



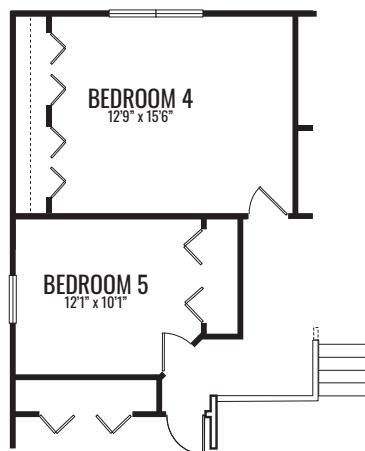
OPTIONAL SPA BATH



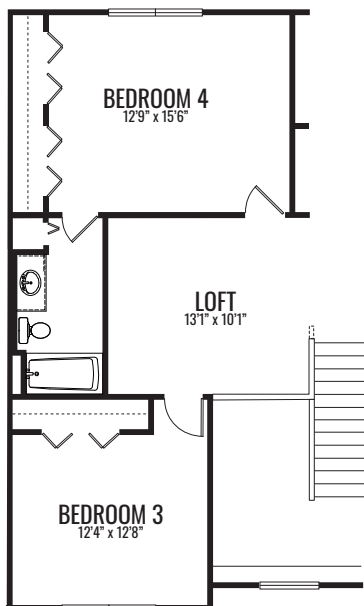
**LUXURY PRIMARY BATH
ELEVATION A**



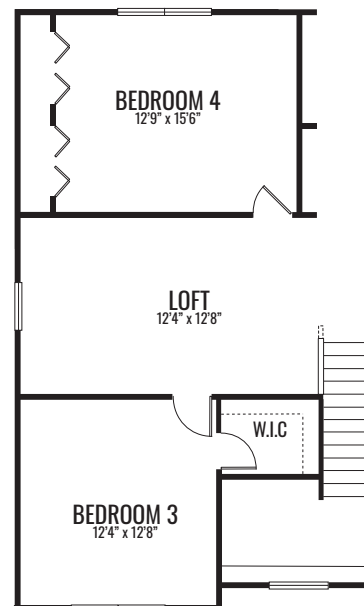
**LUXURY PRIMARY BATH
ELEVATION B**



OPTIONAL BED 5



OPTIONAL 3rd BATH

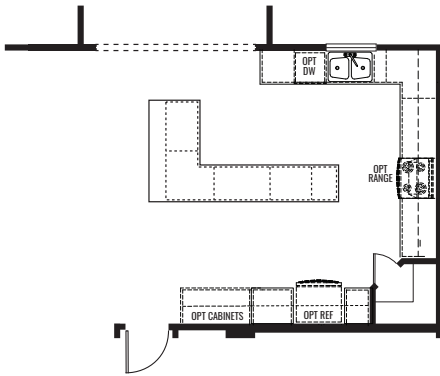


OPTIONAL W.I.C. BED 3

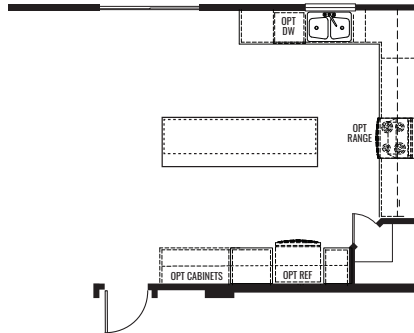
www.providencehomes.net

THE VICTORIA

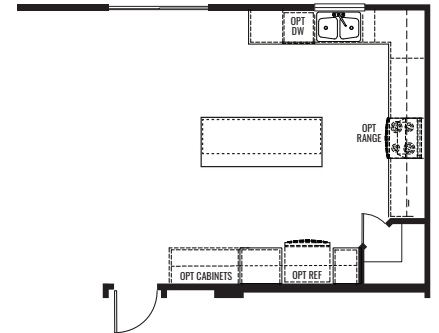
2,940 Square Feet | 4 BDRM | 2.5 BATH



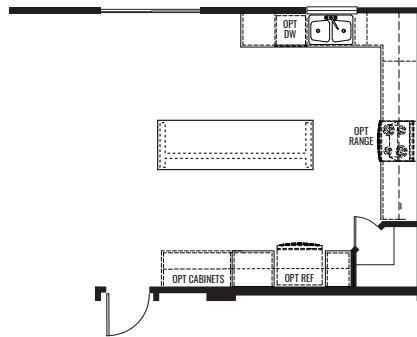
OPT. ISLAND 10'6" x 6'
W/ EXTENDED COUNTERTOP
(ONLY W/ SUNROOM OPTION CHOSEN)



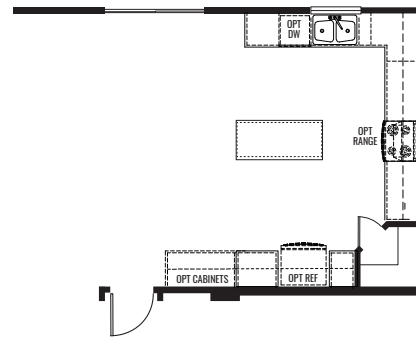
OPT. ISLAND 9'
W/ EXTENDED COUNTERTOP



OPT. ISLAND 7'
W/ EXTENDED COUNTERTOP



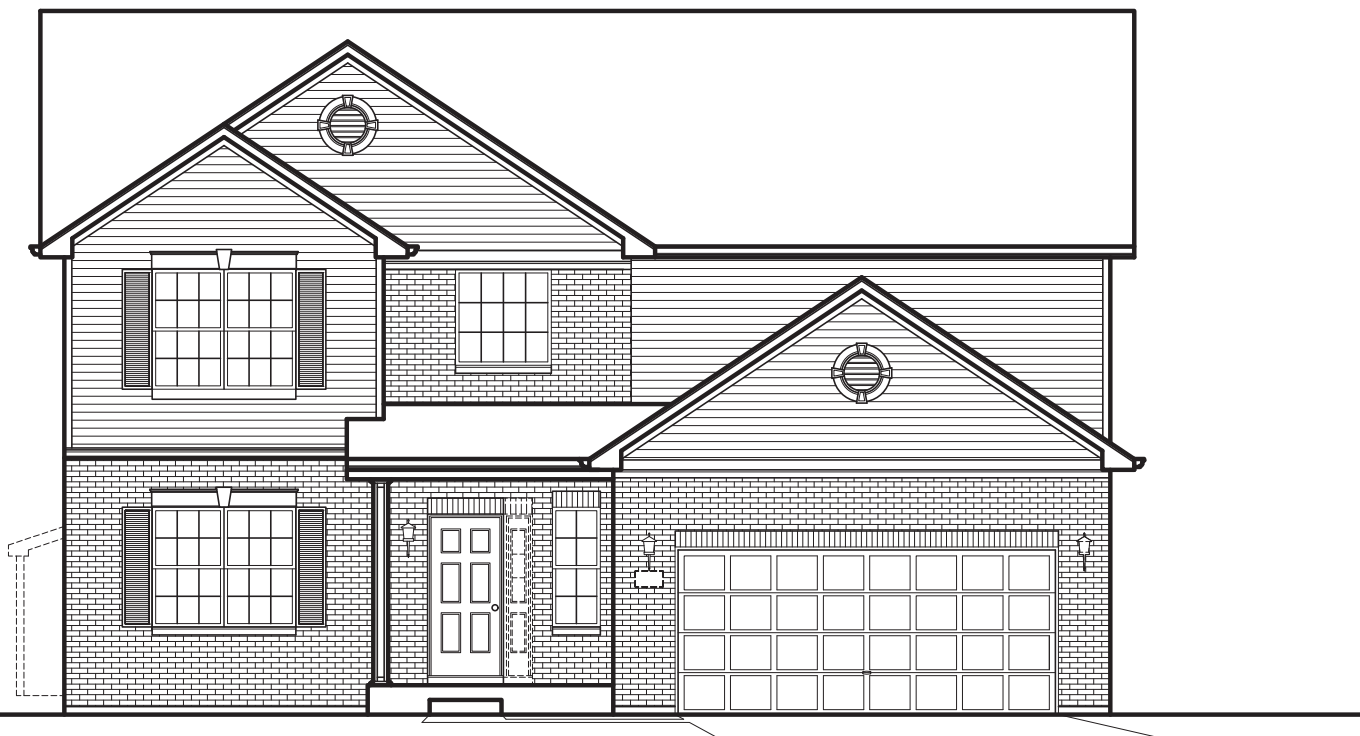
OPT. DELUXE ISLAND 9'
W/ EXTENDED COUNTERTOP
AND WAINSCOT TRIM



OPT. ISLAND 5'
W/ EXTENDED COUNTERTOP

THE VICTORIA

2,940 Square Feet | 4 BDRM | 2.5 BATH



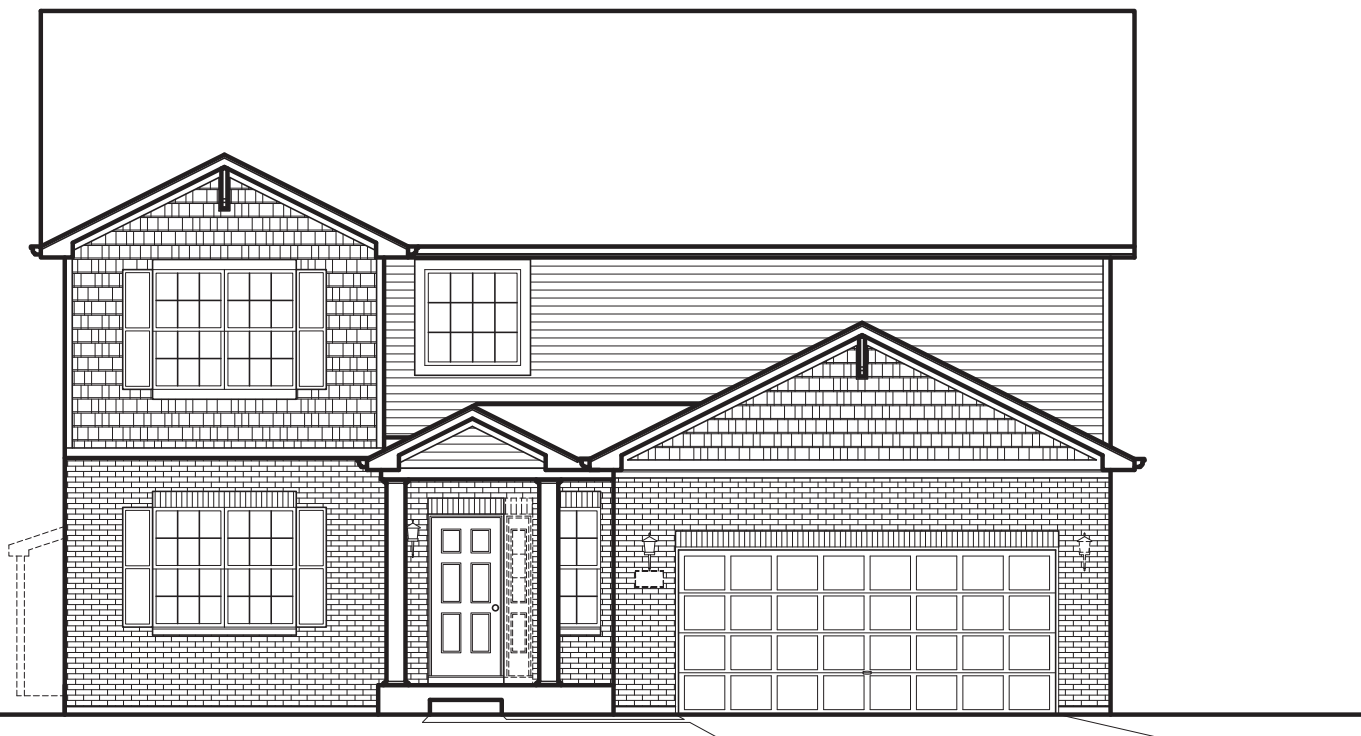
ELEVATION "B"

FALLING WATERS



THE VICTORIA

2,940 Square Feet | 4 BDRM | 2.5 BATH



ELEVATION "C"

www.providencehomes.net

Artist's renderings may vary in precise detail as compared to actual construction. All dimensions are approximate. Providence Real Estate Development, LLC. DBA Providence Homes in an effort to improve its product, reserves the right to make changes without notice. Actual home may be built as shown or reversed as dictated by engineered site plan. © Copyright 2024, Providence Real Estate Development, LLC.

FALLING WATERS



THE VICTORIA

2,940 Square Feet | 4 BDRM | 2.5 BATH



ELEVATION "D"

www.providencehomes.net

Artist's renderings may vary in precise detail as compared to actual construction. All dimensions are approximate. Providence Real Estate Development, LLC. DBA Providence Homes in an effort to improve its product, reserves the right to make changes without notice. Actual home may be built as shown or reversed as dictated by engineered site plan. © Copyright 2024, Providence Real Estate Development, LLC.