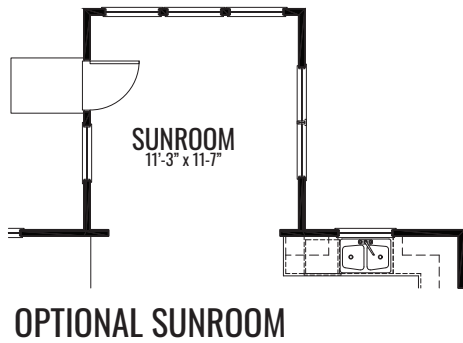
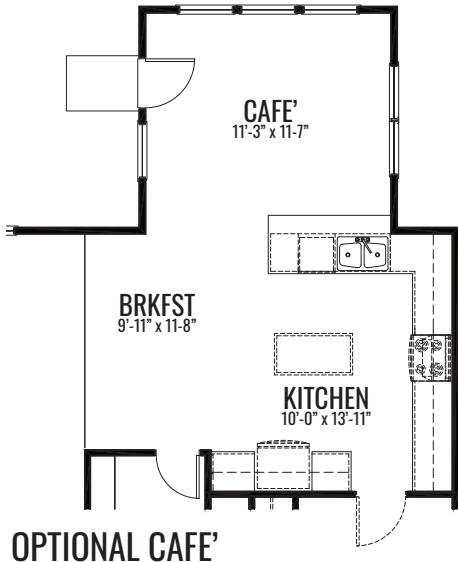


CREEKWOOD CROSSING

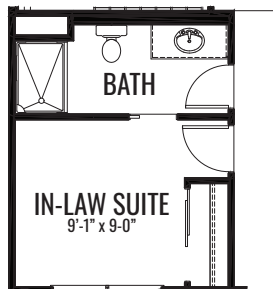


THE ONYX

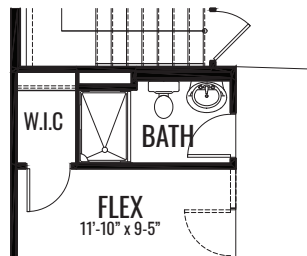
2,340 Square Feet | 3-4 BDRM | 2.5-3 BATH



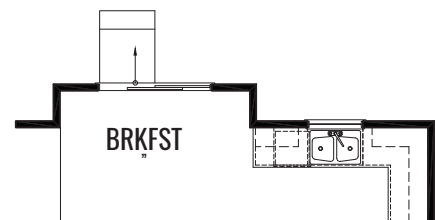
FIRST FLOOR



OPTIONAL IN-LAW SUITE



OPTIONAL BATH W/ SHOWER



OPTIONAL BREAKFAST BAY

www.providencehomes.net

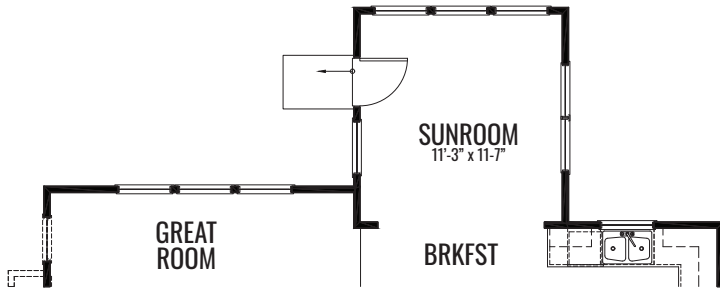
Artist's renderings may vary in precise detail as compared to actual construction. All dimensions are approximate. Providence Real Estate Development, LLC. DBA Providence Homes in an effort to improve its product, reserves the right to make changes without notice. Actual home may be built as shown or reversed as dictated by engineered site plan. © Copyright 2024, Providence Real Estate Development, LLC.

CREEKWOOD CROSSING

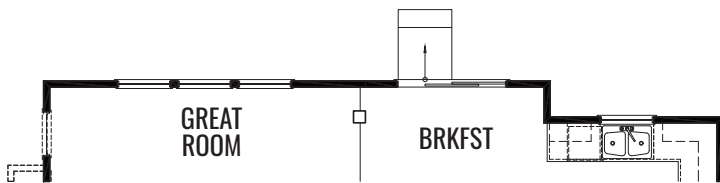


THE ONYX

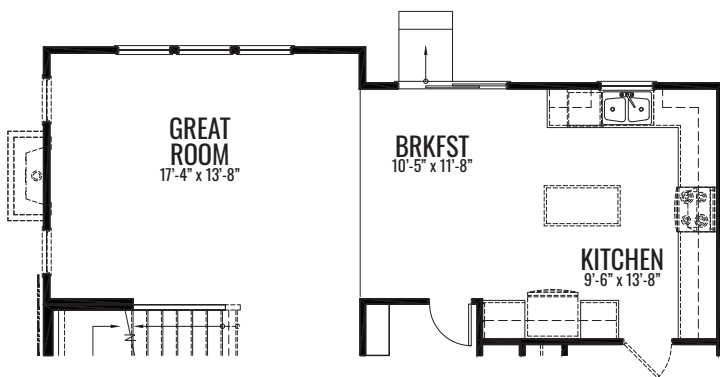
2,340 Square Feet | 3-4 BDRM | 2.5-3 BATH



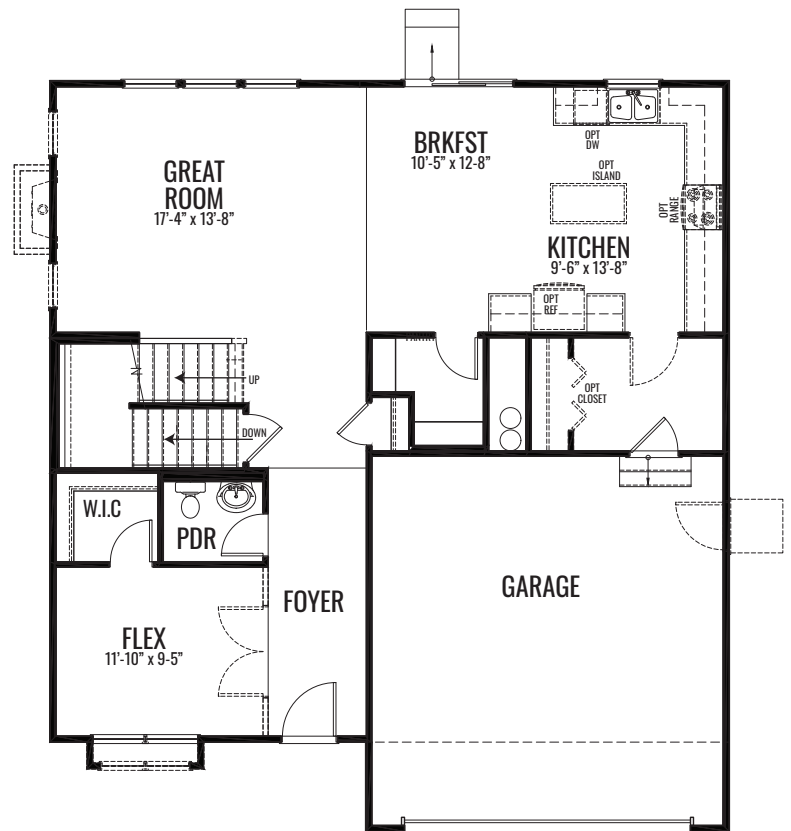
OPTIONAL SUNROOM W/
2' EXTENSION AT GREAT ROOM



OPTIONAL BAY W/ 2'
EXTENSION AT GREAT ROOM



OPTIONAL 2' EXTENSION
AT GREAT ROOM



OPTIONAL EXTENDED PLAN
W/ EXTENDED 2ND FLOOR

www.providencehomes.net

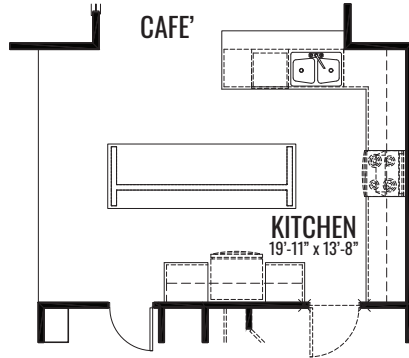
Artist's renderings may vary in precise detail as compared to actual construction. All dimensions are approximate. Providence Real Estate Development, LLC. DBA Providence Homes in an effort to improve its product, reserves the right to make changes without notice. Actual home may be built as shown or reversed as dictated by engineered site plan. © Copyright 2024, Providence Real Estate Development, LLC.

CREEKWOOD CROSSING

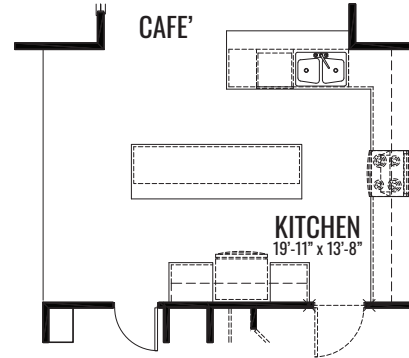


THE ONYX

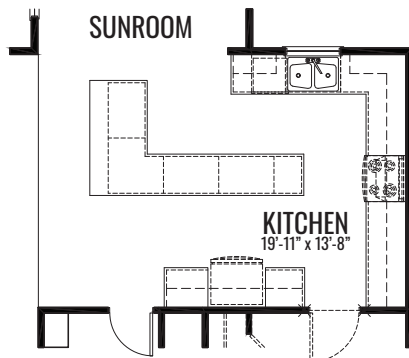
2,340 Square Feet | 3-4 BDRM | 2-3 BATH



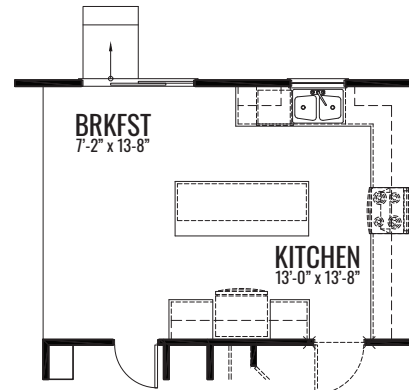
OPTIONAL 9' GOURMET ISLAND W/ CAFE'
EXTENDED PLAN



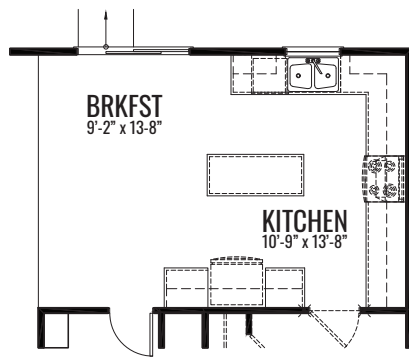
OPTIONAL 9' ISLAND W/ CAFE'
EXTENDED PLAN



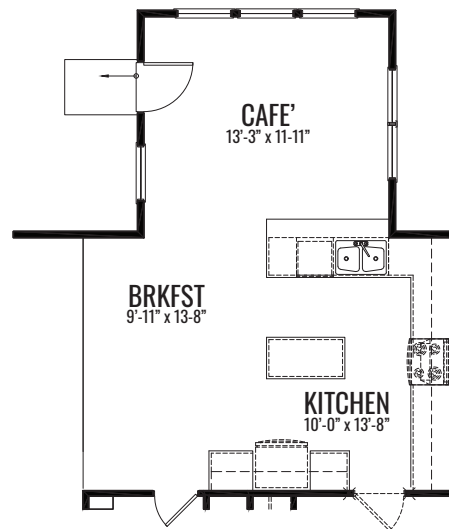
OPTIONAL "L" ISLAND W/ SUNROOM
EXTENDED PLAN



OPTIONAL 7' ISLAND W/ EXTENDED PLAN



OPTIONAL 5' ISLAND W/ EXTENDED PLAN



OPTIONAL CAFE' W/ EXTENDED PLAN

www.providencehomes.net

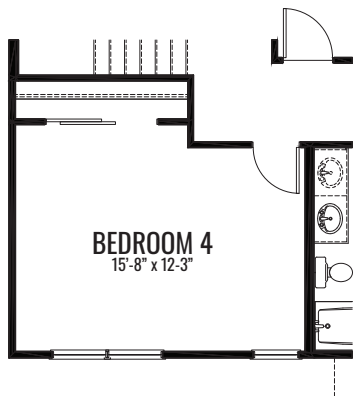
Artist's renderings may vary in precise detail as compared to actual construction. All dimensions are approximate. Providence Real Estate Development, LLC. DBA Providence Homes in an effort to improve its product, reserves the right to make changes without notice. Actual home may be built as shown or reversed as dictated by engineered site plan. © Copyright 2024, Providence Real Estate Development, LLC.

CREEKWOOD CROSSING

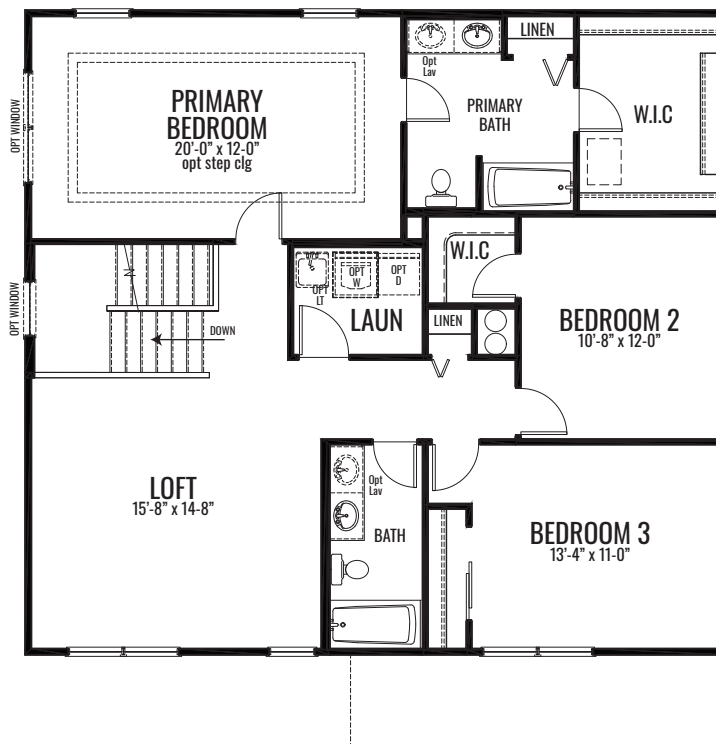


THE ONYX

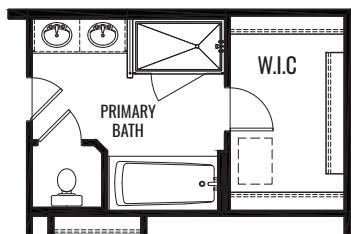
2,340 Square Feet | 3-4 BDRM | 2.5-3 BATH



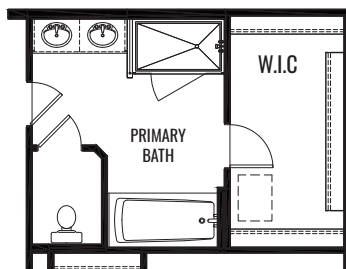
OPTIONAL BEDROOM 4



SECOND FLOOR



OPTIONAL LUXURY PRIMARY BATH



OPTIONAL LUXURY PRIMARY BATH
W/ EXTENDED PLAN

www.providencehomes.net

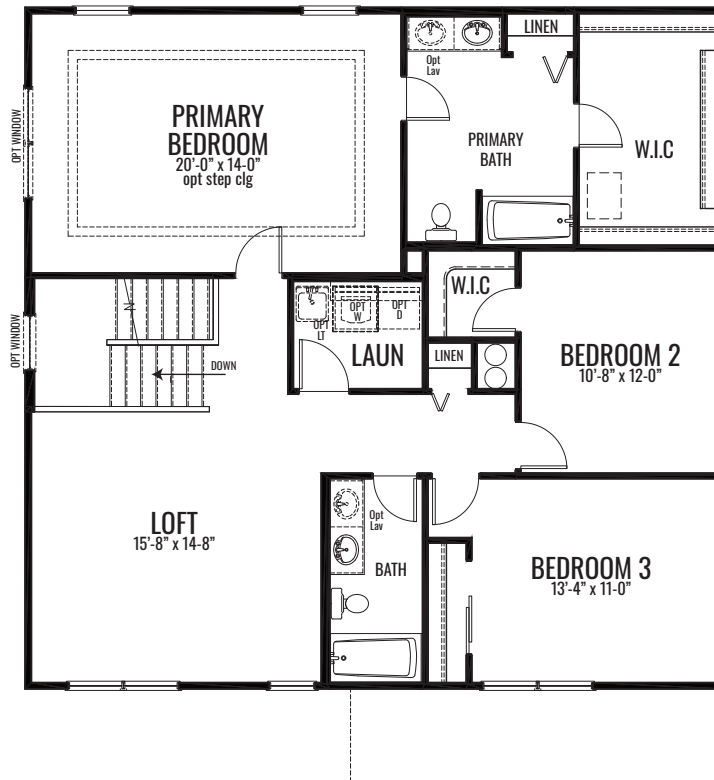
Artist's renderings may vary in precise detail as compared to actual construction. All dimensions are approximate. Providence Real Estate Development, LLC. DBA Providence Homes in an effort to improve its product, reserves the right to make changes without notice. Actual home may be built as shown or reversed as dictated by engineered site plan. © Copyright 2024, Providence Real Estate Development, LLC.

CREEKWOOD CROSSING



THE ONYX

2,340 Square Feet | 3-4 BDRM | 2-3 BATH



OPTIONAL EXTENDED PLAN W/
EXTENDED FIRST FLOOR

www.providencehomes.net

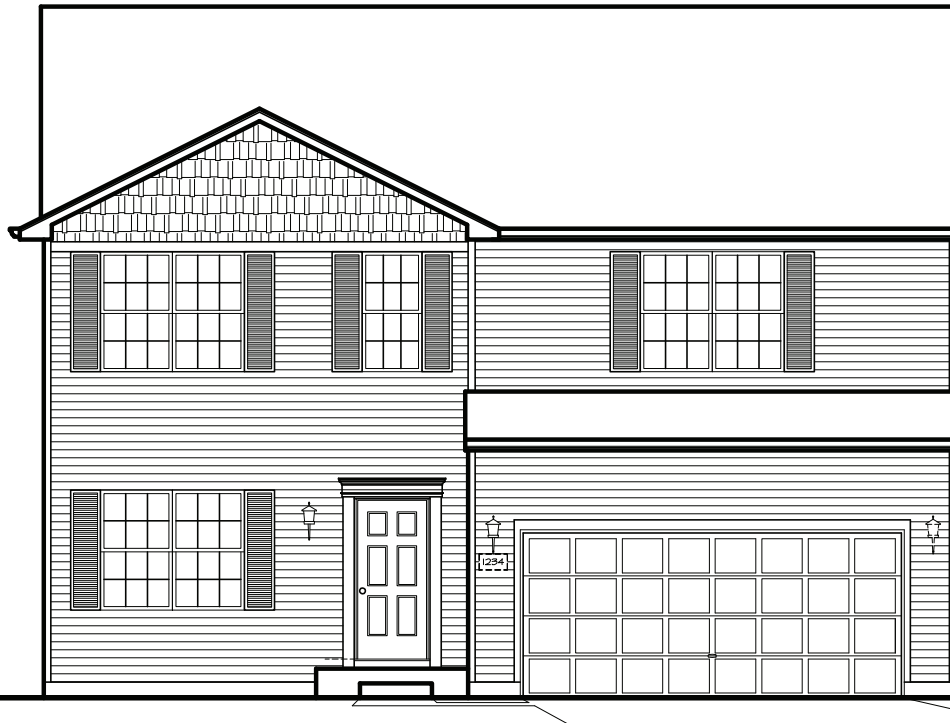
Artist's renderings may vary in precise detail as compared to actual construction. All dimensions are approximate. Providence Real Estate Development, LLC. DBA Providence Homes in an effort to improve its product, reserves the right to make changes without notice. Actual home may be built as shown or reversed as dictated by engineered site plan. © Copyright 2024, Providence Real Estate Development, LLC.

CREEKWOOD CROSSING



THE ONYX

2,340 Square Feet | 3-4 BDRM | 2.5-3 BATH



ELEVATION "A"

www.providencehomes.net

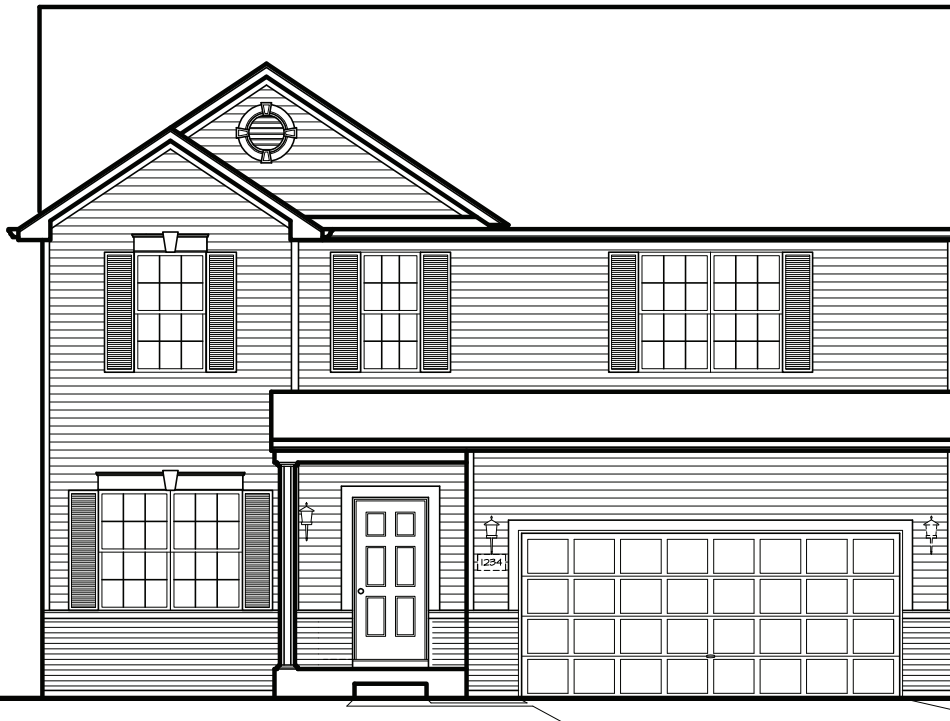
Artist's renderings may vary in precise detail as compared to actual construction. All dimensions are approximate. Providence Real Estate Development, LLC. DBA Providence Homes in an effort to improve its product, reserves the right to make changes without notice. Actual home may be built as shown or reversed as dictated by engineered site plan. © Copyright 2024, Providence Real Estate Development, LLC.

CREEKWOOD CROSSING



THE ONYX

2,340 Square Feet | 3-4 BDRM | 2.5-3 BATH



ELEVATION "B"

www.providencehomes.net

Artist's renderings may vary in precise detail as compared to actual construction. All dimensions are approximate. Providence Real Estate Development, LLC. DBA Providence Homes in an effort to improve its product, reserves the right to make changes without notice. Actual home may be built as shown or reversed as dictated by engineered site plan. © Copyright 2024, Providence Real Estate Development, LLC.

CREEKWOOD CROSSING



THE ONYX

2,340 Square Feet | 3-4 BDRM | 2.5-3 BATH



ELEVATION "C"

www.providencehomes.net

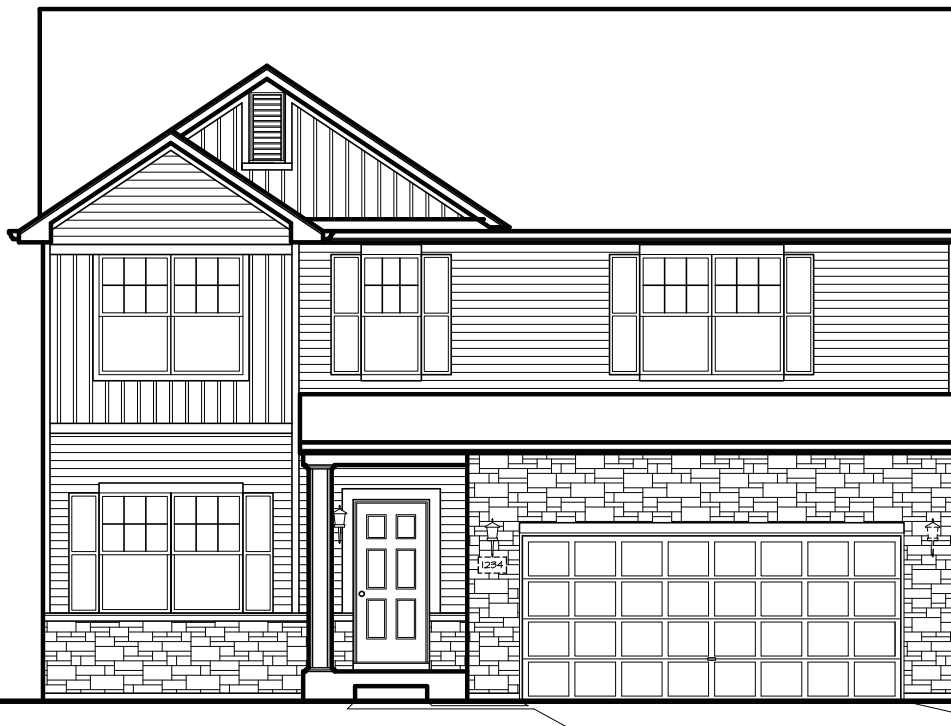
Artist's renderings may vary in precise detail as compared to actual construction. All dimensions are approximate. Providence Real Estate Development, LLC. DBA Providence Homes in an effort to improve its product, reserves the right to make changes without notice. Actual home may be built as shown or reversed as dictated by engineered site plan. © Copyright 2024, Providence Real Estate Development, LLC.

CREEKWOOD CROSSING



THE ONYX

2,340 Square Feet | 3-4 BDRM | 2.5-3 BATH



ELEVATION "D"

www.providencehomes.net

Artist's renderings may vary in precise detail as compared to actual construction. All dimensions are approximate. Providence Real Estate Development, LLC. DBA Providence Homes in an effort to improve its product, reserves the right to make changes without notice. Actual home may be built as shown or reversed as dictated by engineered site plan. © Copyright 2024, Providence Real Estate Development, LLC.